



Honesty • Efficiency • Supremacy

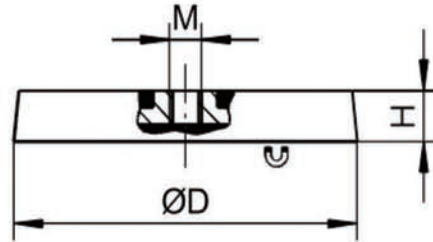
# Rubber Coated Magnet



厦门顶磁磁业有限公司  
XIAMEN KINGS MAGNET CO.,LTD

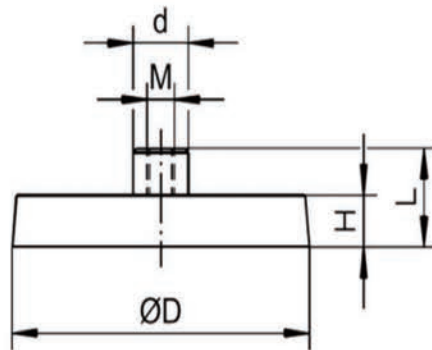
# Rubber Coated Magnet

## 1. Rubber Coated Magnet - Inertial Thread



Model	D(mm)	M	H(mm)	Weight (g)	Pull Force (KG)
Z01A-22	22	M3-M6	6	10	3.5
Z01A-31	31	M3-M6	6	18	7.5
Z01A-36	36	M3-M6	7	23	8
Z01A-43	43	M3-M6	6	30	10
Z01A-66	66	M4-M10	8	96	22
Z01A-88	88	M4-M10	10	175	45

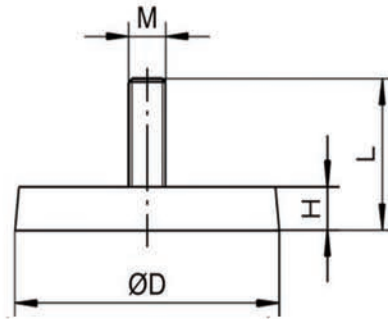
## 2. Rubber Coated Magnet - Screwed Bush



Model	D(mm)	M	H(mm)	L(mm)	Weight (g)	Pull Force (KG)
Z01B-22	22	M3-M6	6	11.5	11	3.5
Z01B-31	31	M3-M6	6	11.5	19	7.5
Z01B-36	36	M3-M6	7	11.5	24	8
Z01B-43	43	M3-M6	6	10.5	31	10
Z01B-66	66	M4-M10	8	13.5	100	22
Z01B-88	88	M4-M10	8	13.5	179	45

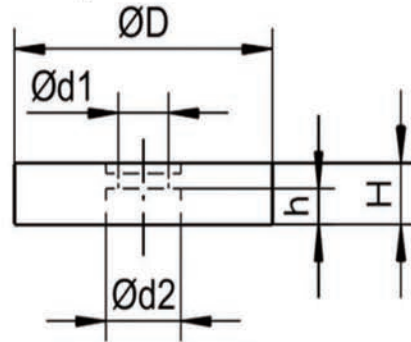
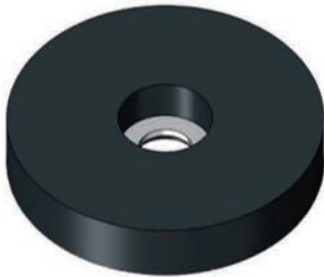
## Rubber Coated Magnet

### 3. Rubber Coated Magnet - External Thread



Model	D(mm)	M	H(mm)	L(mm)	Weight(g)	Pull Force(KG)
Z01C-22	22	M3-M6	6	13	11	3.5
Z01C-31	31	M3-M6	6	21	22	7.5
Z01C-36	36	M3-M6	7	22	27	8
Z01C-43	43	M3-M6	6	21	34	10
Z01C-66	66	M4-M10	8	23	100	22
Z01C-88	88	M4-M10	8	23	184	45

### 4. Rubber Coated Magnet - Cylinder Bore

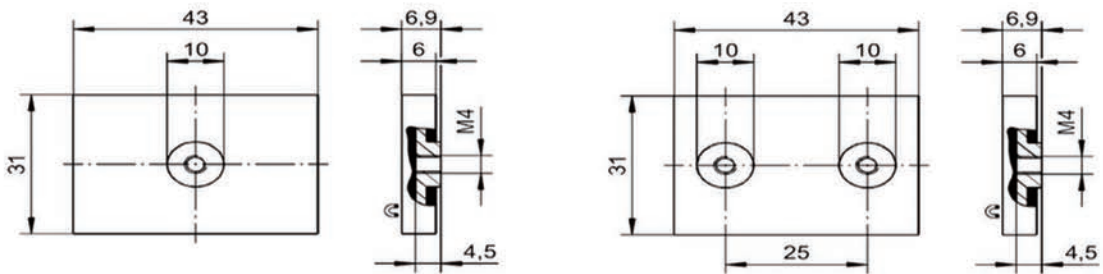


Model	D(mm)	H(mm)	h(mm)	d1(mm)	d2(mm)	Weight(g)	Pull Force(KG)
Z01E-43	43	6	1.6	3.5	10	27	10
Z01E-66	66	8	3.3	6.5	20	100	22
Z01E-88	88	8	3.3	6.5	20	182	45



# Rubber Coated Magnet

## 5. Rubber Coated Magnet - Rectangular Shape



Model	L (mm)	B (mm)	H (mm)	M	Weight (g)	Pull Force (KG)
Z01G43-1	43	31	6.9	M4*1	27	8.5
Z01G43-2	43	31	6.9	M4*2	28	8.5

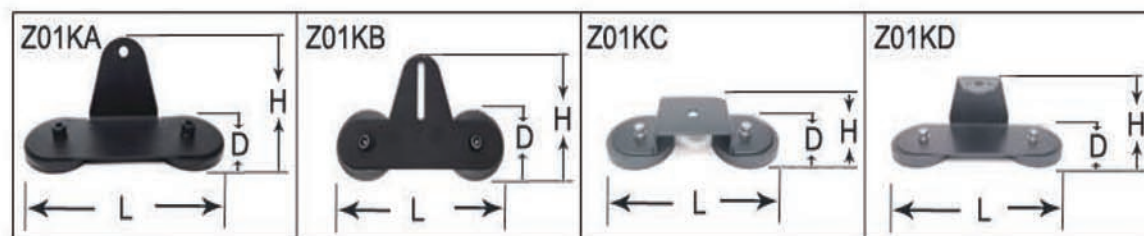
## 6. Rubber Coated Magnet With Handle



Model	D (mm)	H (mm)	h (mm)	Weight (g)	Pull Force (KG)
Z01H-43	43	68	6	42	8.5
Z01H-66	66	98	8	118	22
Z01H-88	88	98	8	205	45

# Rubber Coated Magnet

## 7. Rubber Coated Magnet - Magnetic Sucker Holder



Model	D (mm)	L (mm)	H (mm)	Weight (g)	Pull Force (KG)
Z01KA66	66	185	78	880	72
Z01KA88	68	210	78	1260	160
Z01KB66	66	185	120	810	72
Z01KB88	68	210	130	1200	160
Z01KC66	66	170	30	780	72
Z01KC88	68	195	30	1160	160
Z01KD66	66	185	60	800	72
Z01KD88	68	210	30	1280	160

